



X-PORTE



SCAN
Using default
transducer and
exam type.

ENTER
Patient information.

SELECT
Transducer and
exam type.

How
exam.
procedur
perfect your
technique.

HELLO, where would you like to

SOL

X-PORTE



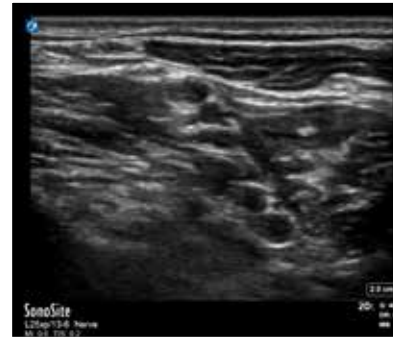
5

TECHNOLOGY DRIVEN
5-YEAR STANDARD WARRANTY
MADE IN THE USA



One Look and the Difference is Clear

XDI patent-pending imaging technology drives X-Porte's image clarity and resolution by significantly reducing visual clutter.

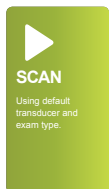


The World's First Ultrasound Kiosk

X-Porte represents an entirely new approach to clinical ultrasound. Its imaging, features, and educational resources are fluidly brought together in a convenient, all-in-one kiosk design.

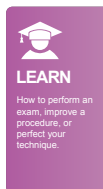
At the sweep of your hand, it responds so quickly and intelligently to your imaging needs, you'll know it was created precisely for professionals like you. Its self-explanatory control panel makes system navigation a breeze, and its sealed touch screen has no buttons for pathogens to hide behind.

X-Porte's slender profile makes it easy to maneuver alongside beds and exam tables for point-of-care visualization and procedures. For portability and durability during transport, its screen folds down and its stand lowers making X-Porte even more compact for navigating busy corridors. The X-Porte ultrasound core can be detached easily from the kiosk to provide another configuration option. For servicing, nothing could be more convenient than X-Porte's five-year warranty and removable engine.



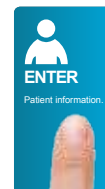
Breakthrough XDI Imaging

X-Porte's XDI beam-forming technology was created to meet the challenge of side-lobe artifacts, so now you can scan with image clarity, resolution, and color sensitivity never before seen in point-of-care ultrasound systems.



Real-Time Scan Along Learning

For instant reference, scan along with an onboard library of Visual Guides featuring step-by-step learning tutorials. Use X-Porte's Visual Guides for comparing 3D beam-direction animations to corresponding 2D ultrasound images.



Gesture-Driven Interface

Optimized workflow is always at your fingertips. Easily customize the interface to suit your needs. Don't like the order of menu items? Change them. Too many controls? Minimize them.



Designed from the ground up for your work style and work environment, X-Porte offers you an entirely new ultrasound experience by providing these revolutionary tools in a unique, integrated system exclusive to SonoSite.

SYSTEM SPECIFICATIONS

Stand Dimensions: 26.4" L x 21.2" W
 Stand Height: max 64" (monitor up) / min 42.2" (monitor down)
 Height Adjustment: 9" travel
 12.1" Capacitive Touch Screen (multi-touch gestures for system controls)
 System Boot-up: <20 secs
 HD Monitor: 19" diagonally
 Control Panel Tilt Adjustment: 0 to 110 degrees
 Clinical Monitor Viewing: 85 degrees left and right, 60 degrees up, 80 degrees down
 Architecture: All digital broadband
 Dynamic Range: Up to 183 dB
 Gray Scale: 256 shades
 HIPAA Compliance: Comprehensive toolset

IMAGE MODES

2D, Broadband imaging
 Tissue Harmonic Imaging
 Pulse Inversion Harmonic Imaging
 M-Mode
 Velocity Color Doppler
 Color Power Doppler
 Pulsed Wave Doppler
 Pulsed Wave Tissue Doppler
 Continuous Wave Doppler, ECG

IMAGE PROCESSING

Extreme Definition Imaging (XDI)
 SonoAdapt Tissue Optimization
 SonoHD2 Imaging Technology
 SonoMB Multibeam Technology
 Dual Imaging
 Dual Color Imaging
 AutoGain and AutoGain Brightness Adjust
 Restore Default Gains
 Dynamic Range
 Duplex Imaging
 8x Zoom Capability
 Post Processing: Dynamic Range, Zoom
 2D Image Optimization: Average and Difficult
 Overall Gain, Near and Far Field Gain Control
 Color and Doppler Flow Optimization (low, medium, high)
 Color Variance Mode
 2D Reduced Imaging Sector

STEEP NEEDLE PROFILING

(Available on these transducers and exams.)
 HFL50xp: Breast, MSK, Nerve, Small Parts
 L38xp: Nerve, Venous
 L25xp: Nerve, Venous
 HSL25xp: Nerve Venous

POWER SUPPLY

System operates via battery or AC Power
 Rechargeable lithium-ion battery
 Battery life: 1.0 hour, 3 days on idle
 Battery charges to 80% capacity in 3 hours

OTHER HIGHLIGHTS

Programmable Controls
 Labeling: Predefined Labels, Customized Labels, Predefined Pictograms
 Worksheets: Acute Care Worksheets (ACEP Guidelines) and Musculoskeletal Worksheets
 Steep Needle Profiling software
 *Embedded DVR (Digital Video Recorder)
 *Triple Transducer Connect
 *Storage Basket

**Standard with X-Porte*

ONBOARD IMAGE AND CLIP STORAGE REVIEW

2D Cine Review – 20 seconds
 PW, CW, M-Mode Cine Review – 16 seconds
 Internal Flash Memory – 64 GB
 Thumbnail review of saved images and clips
 Prospective and Retrospective Clip Store
 Auto Clip Export (auto export to USB at end of study)
 Video clip playback at 1, ½ or ¼ of the captured rate
 Video Clip Save Lengths: 2, 4, 6, 10, 15, 30 and 60 seconds.
 Annotations on recalled images
 Image Format: jpeg, avi, bmp
 Export Format: html
 JPEG Compression Options: High, Medium, Low

DATA MANAGEMENT AND WIRELESS

5 USB 2.0 Ports
 Ethernet Port
 DVR USB Port
 ECG Connector
 Barcode auto-query (populates patient's demographic from worklist)
 DICOM Image Management: Print, Store, Modality Worklist, Perform Procedure Step (PPS), Storage Commitment
 DICOM Image Management: Exam Routing for Diagnostic, Procedure, Education Exams
 Embedded Wireless Option: 802.11 (B, G, and N networking)

ACCESSORIES

Medical Grade Black and White Printer (Sony UP-D897 USB B&W printer)
 PowerPark
 USB Bar Code Reader
 Footswitch
 ECG Module

SUPPORTED LANGUAGES

English, French, Italian, Portuguese, Spanish, German

LEARNING PACKAGES

Ultrasound Imaging Basics; Packages for Acute Care, Procedures, Anesthesiology, On-board System Help

Note: Desktop configuration available.



Applications:
 abdominal, gyn,
 musculoskeletal, nerve, ob
 5-2 MHz Curved
 Scan depth: 30 cm



Applications:
 breast, musculoskeletal, nerve,
 small parts
 15-6 MHz Linear
 Scan depth: 6 cm



Applications:
 arterial, lung, nerve, small
 parts, venous
 10-5 MHz Linear
 Scan depth: 9 cm



Applications:
 abdomen, cardiac, lung, ob
 5-1 MHz Phased
 Scan depth: 35 cm



Applications:
 arterial, lung, musculoskeletal,
 nerve, ophthalmic, superficial,
 venous
 13-6 MHz Linear
 Scan depth: 6 cm



Applications:
 gyn, ob
 9-5 MHz Curved
 Scan depth: 15 cm



Applications:
 arterial, lung, musculoskeletal,
 nerve, ophthalmic, superficial,
 venous
 13-6 MHz Linear
 Scan depth: 6 cm

Needle guides and kits available with the following transducers: L38xp, HFL50xp, C60xp, ICTxp, L25xp, and P21xp.

A transverse needle guide is available with the L25xp.



FUJIFILM SonoSite, Inc.
 Worldwide Headquarters
 21919 30th Drive SE, Bothell, WA 98021-3904
 Tel: +1 (425) 951-1200 or +1 (877) 657-8050
 Fax: +1 (425) 951-6800

www.sonosite.com/products/x-porte