

DC-90 Vet  
Veterinary Diagnostic Ultrasound System  
Insight, Intelligence, And more  
X-Insight



Insight, Intelligence, And more



# X-Insight

## Insight of Veterinarian demands

Mindray Animal Medical brand new solution provides continual insight into the Veterinarians' clinic needs by creating evolving cutting edge ultrasound technology.

Full of vivacity, with the goal of insight into the future and pursuit of infinite possibilities, it is constantly improving with increased scalability.



## High efficiency with precision imaging

DC-90 Vet with X-Insight focuses on customer requirements such as providing a more comprehensive and dedicated solution to ultrasound imaging and improving product usability to enhance diagnostic efficiency.

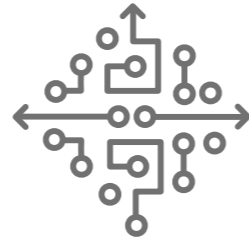
Based on an insightful look into Veterinarians' needs, the DC-90 Vet with X-Insight is designed to deliver high efficiency with precision imaging, which is empowered by express clarity, exceptional Intelligence, and benefits from an exceeding experience.



# eXpress Clarity

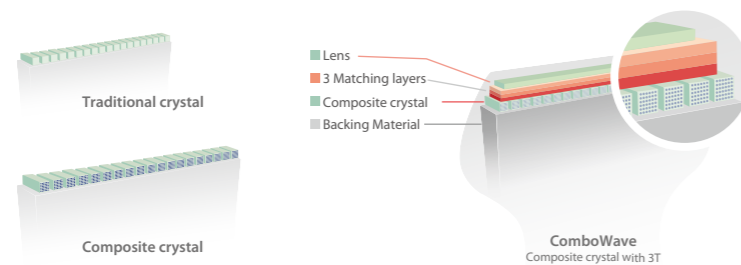
## Thunder-speed VET imaging : X-Engine

- GPU+CPU architecture



## Cutting-edge transducer technology

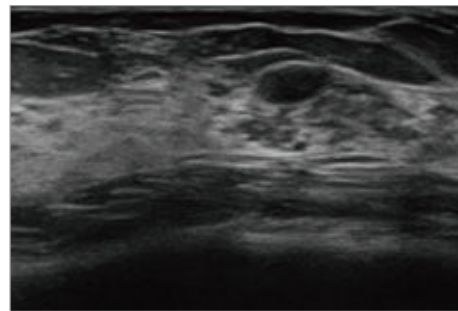
- 3T technology : Better acoustic energy conversion/reduce "cross talk" / thermal control
- ComboWave technology : Better Spatial/Contrast Resolution
- Single crystal transducer : Improve acoustic transmission efficiency



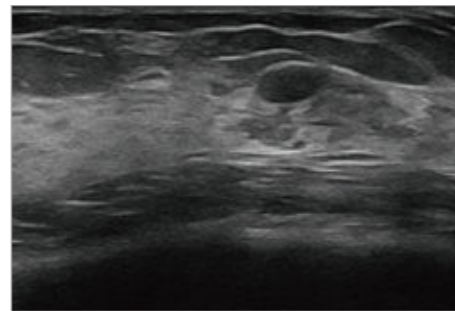
## Superb visualization

### IClear<sup>+</sup>

IClear<sup>+</sup> provides better image with excellent speckle noise rejection and contrast resolution to easily identify the lesions for improved diagnostic confidence.



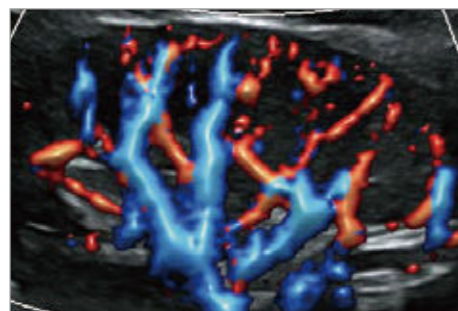
IClear Off



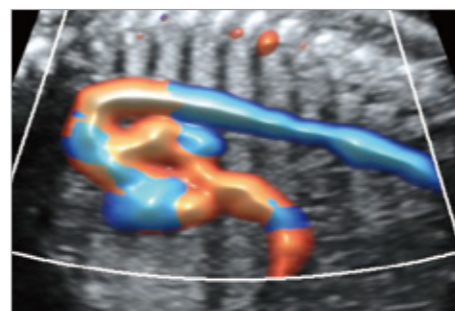
IClear On

### Glazing Flow

A-brand new way to demonstrate the color Doppler flow innovatively in a 3D visualization Intuitive and easy visualization of blood flow structures even very tiny vessels.

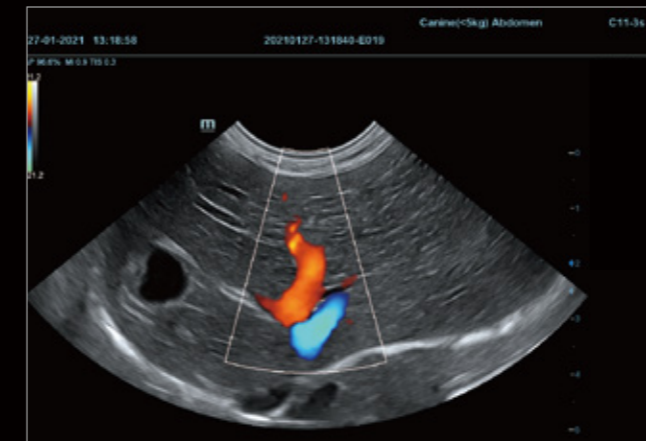


Kidney

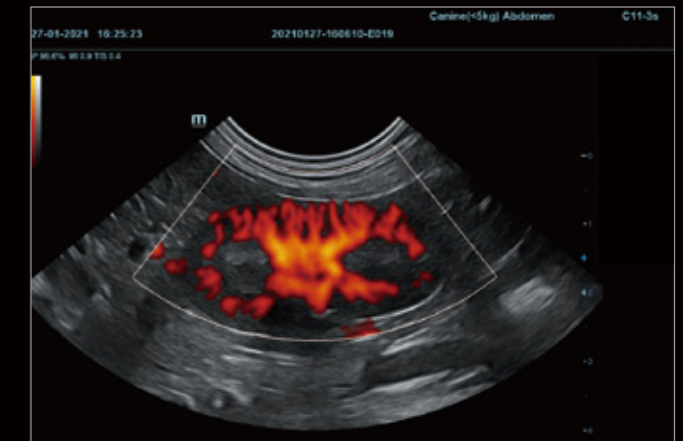


Fetal Cardiovascular

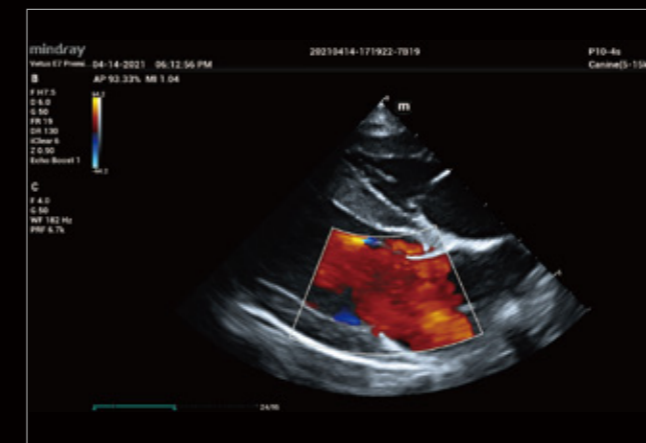
# Image Gallery



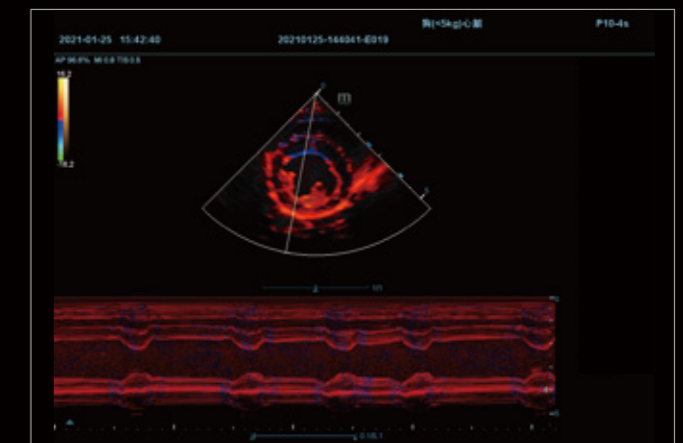
Hepatic Portal Vein



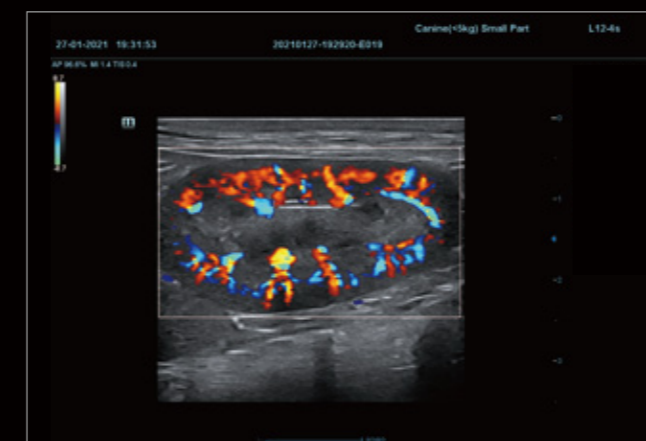
Renal Power Doppler



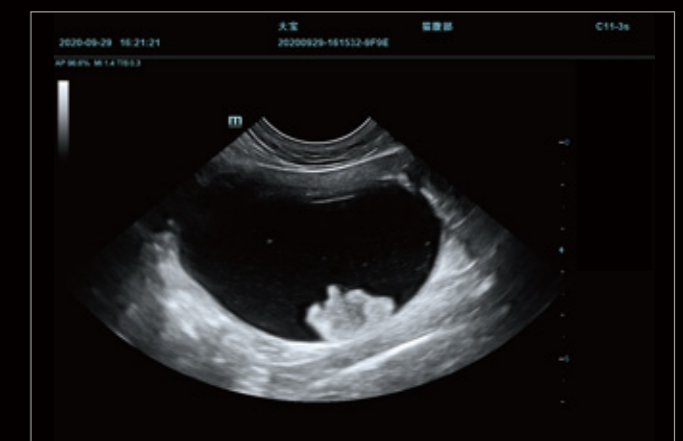
Left Ventricle



Free Xros CM



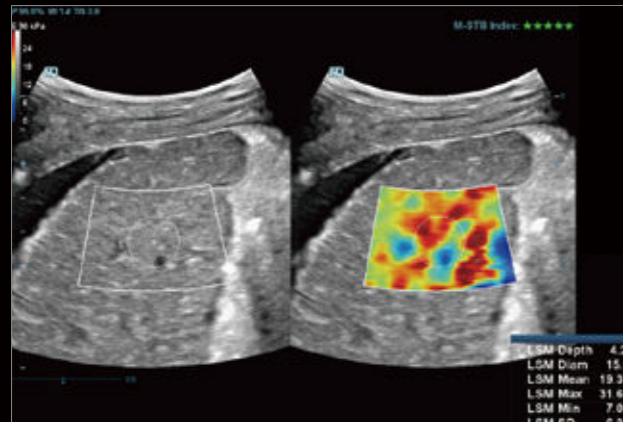
Renal Color Doppler



Vesical Polypus

# eXceptional Intelligence

## Leading Edge Shear Wave Elastography

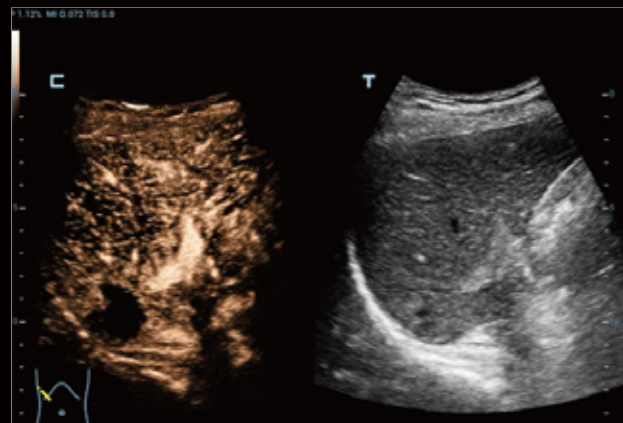


STE Of Liver

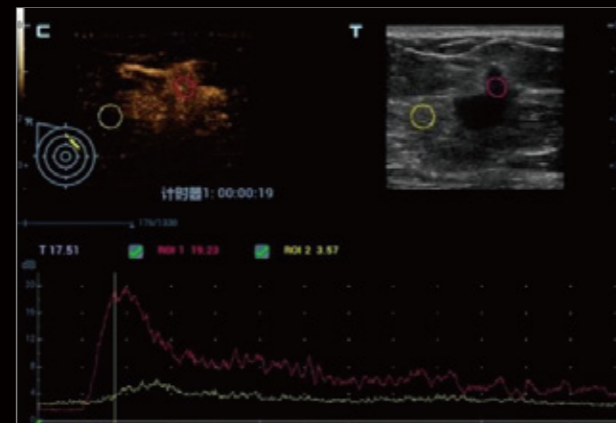


STQ Of Liver

## UWN+ Contrast Imaging

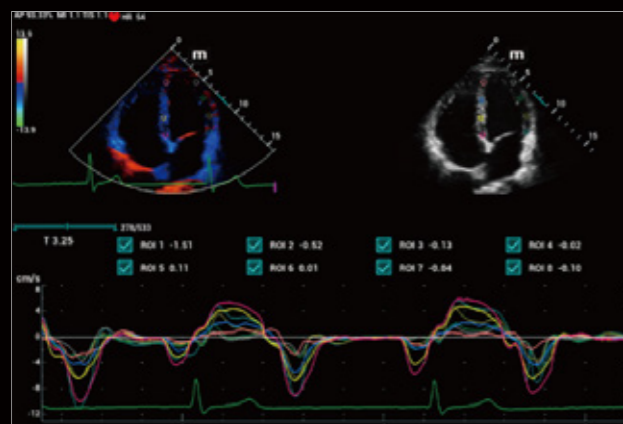


Contrast Of Liver

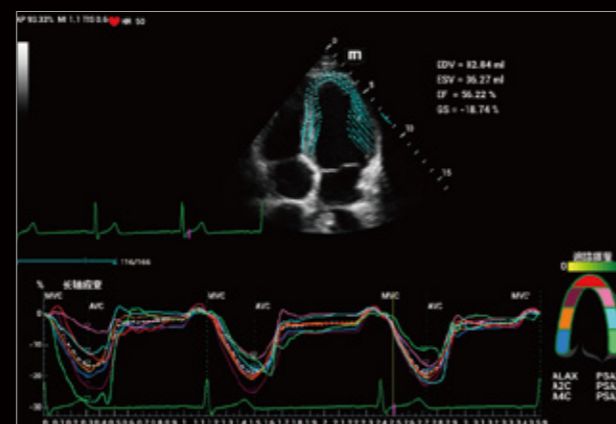


Contrast Of SMP

## TDIQA & TTQA



Tissue Doppler Imaging & QA



Tissue Tracking & QA

# eXceptional Experience

Innovation is inspired by clinical needs. The DC-90 Vet with X-Insight is focusing on what matters to you and refines your user experience by providing clarity, flexibility, and intuitive technologies that exceed your expectations.

21.5" High Definition Monitor  
180-degree rotation

Dual-Wing Floating Arm  
Move anywhere you want

13.3" anti-glare touch screen  
30-degree rotation, multi-gesture

Sliding keyboard with  
designed silicon cover

Anti-dirty control panel  
Rotatable & height adjustable

Designed for cable management  
Help keep cables off the ground

5 active smart transducer sockets

High capacity battery for standby mode\*  
Keep the image data always safe

Stable wheels with small footprint



\* Battery is optional configuration