

Probo
VETERINARY

mindray
animal care
AUTHORIZED DEALER

Vetus EQ

Equine Ultrasound Image System

Efficiency & Quality



LinkedIn Facebook Instagram

Search Mindray Animal Medical

www.mindrayanimal.com
service@mindrayanimal.com

P/N:ENG-Vetus EQ-210285X8P-20221205
©2022 Shenzhen Mindray Animal Medical Technology Co., LTD. All rights reserved.

Probo
VETERINARY

mindray
animal care
AUTHORIZED DEALER



Concise & Practical

Innovative Design

- Intuitive touch interface
- Sealed touchpad
- Seamless design control panel

Sturdy Construction

- Touchpad design prevent animal hairs
- Resisting harsh cleaning agents corrosion



15.6-inch high resolution LED monitor, narrow border, wide view

12.3-inch high sensitivity anti-glare touch screen

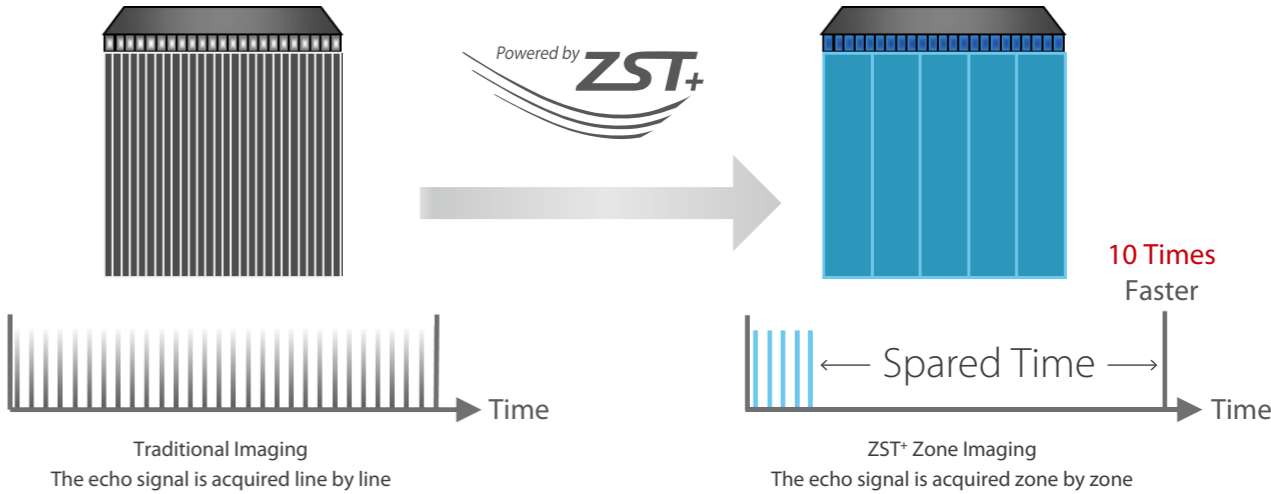


3 kg main unit 44 mm thickness

Ultra thin Ultra light

Advanced ZST+ Imaging Platform

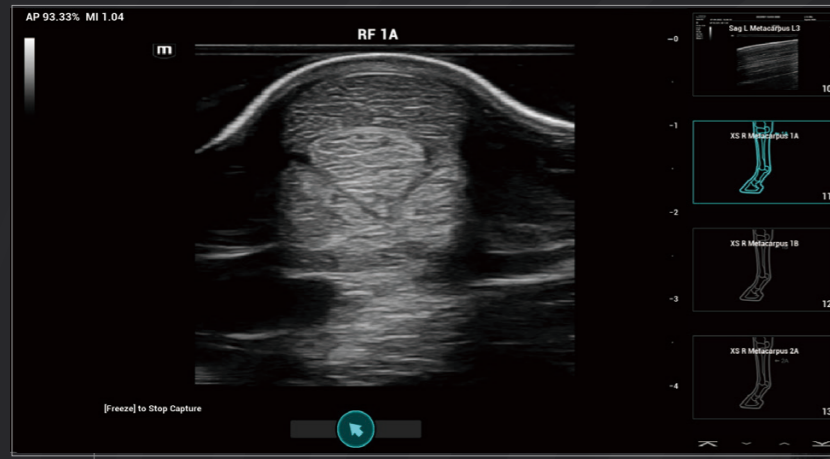
ZST+ platform, empowered by Zone Imaging, Zone Focusing, and Zone Processing, tremendously improves the imaging level of ultrasound systems in all directions, enabling equine practitioners to see more precisely, comprehensively, and quickly.



Mindray Animal Medical has been developing innovative and diversified ultrasound veterinary solutions since its inception. For years, Mindray Animal Medical always strives to be supportive of healthcare of varied species, including companion animals, rare animals, farm animals, horses and any other ones.

Vetus EQ is a portable and practical color doppler ultrasound system customized for the equine diagnosis. Equipped with the revolutionary technology of ZST+ platform, Vetus EQ provides the professional solutions for ultrasonic examination of horses.

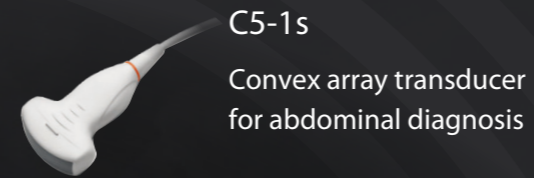
Dedicated Equine Applications



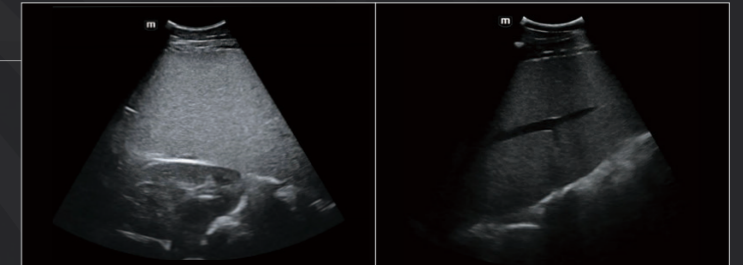
iWorks: Equine Dedicated Protocol

Equine-dedicated, standard and simplified workflow application reduces 50% exam time, 80% keystrokes

Abdomen Application

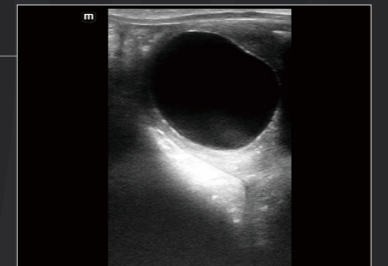


C5-1s
Convex array transducer for abdominal diagnosis



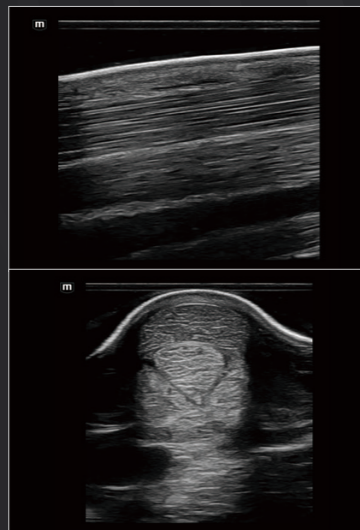
Reproduction Application

6LE5Vs
Intra-rectal linear array transducer for reproduction



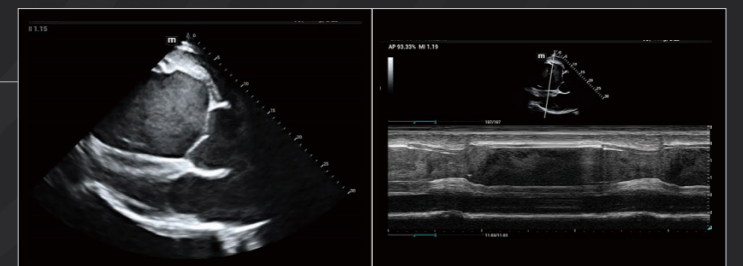
MSK Application

L13-3Ns
Wide frequency range linear transducer for tendon application



Cardiology Application

P4-2s
Phased array transducer with excellent penetration used for cardiology application



Portable & Durable

iCover—Protective Cover Set

Preventing dust, dirt and splash, protecting the main unit from accidental fall, pump and smash.



U-Bank

Main unit supports up to **8 hours** of continuous scanning with U-Bank.



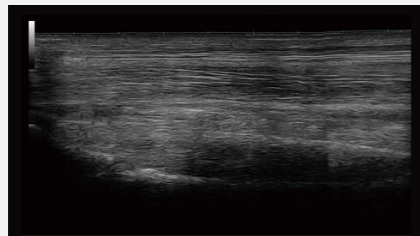
Easy Backpack

Suitable and sturdy backpack for easy carriage especially in outside work conditions. Dedicated design of inner pockets for transducers, adapter modules, coupling gels and other tools.



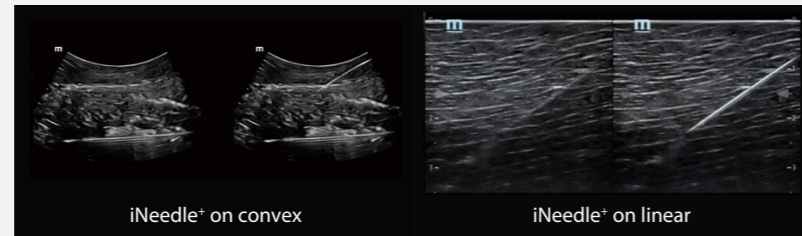
Dedicated & Professional

Tendon Application



iScape

iScape provides wide-view image to help measure the equine tendon length and evaluate its status.



iNeedle+ on convex

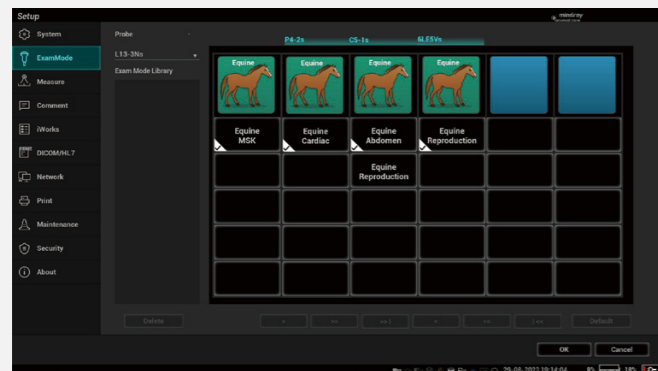
iNeedle+ on linear

*iNeedle+

iNeedle+ provides the equine practitioner with an easy tool for the operations: injection, aspiration and biopsy.

*optional

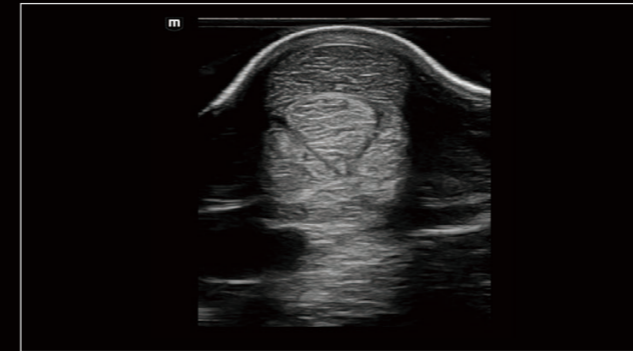
Specific and Professional Presets



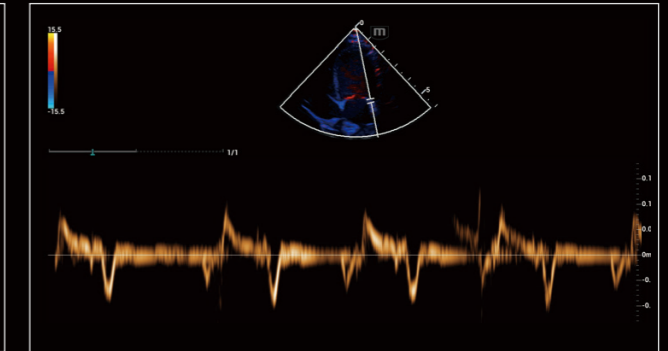
Focused on the equine ultrasound diagnosis demand, Vetus EQ developed a series of professional preset for different application scenarios:

- Equine MSK
- Equine Cardiac
- Equine Abdomen
- Equine Reproduction

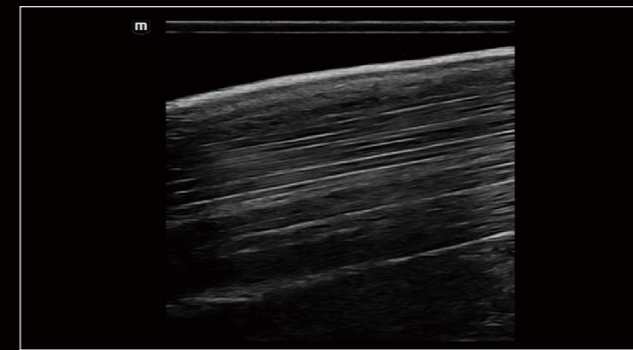
All above increase the efficiency and quality of equine practitioners' work.



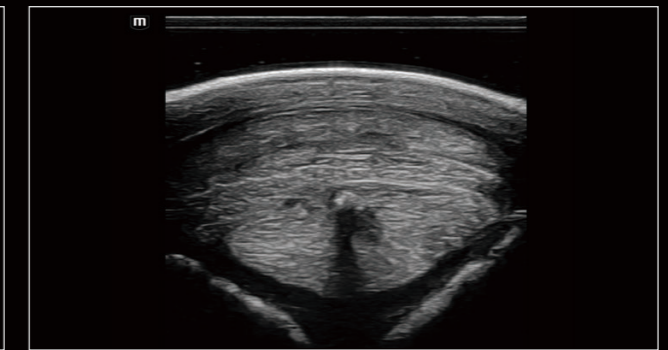
Equine Tendon



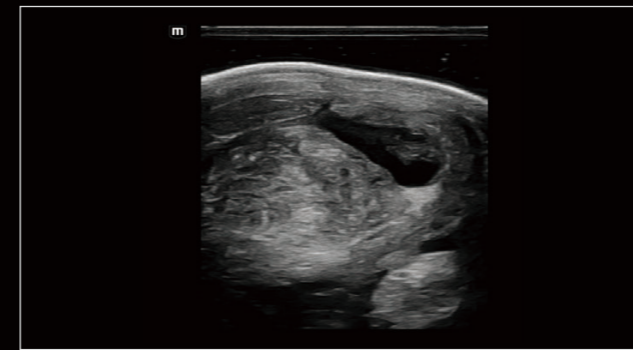
Equine Cardiac TVD



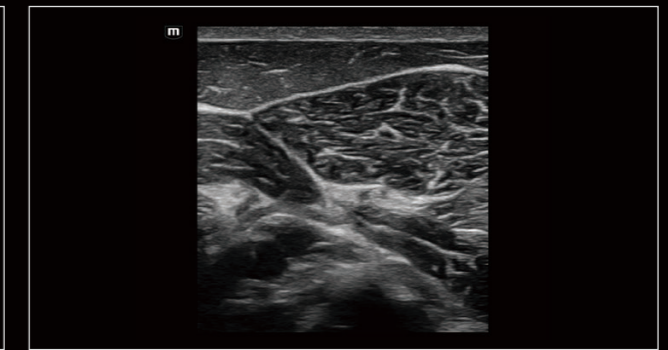
Equine Proximal Metacarpal Region



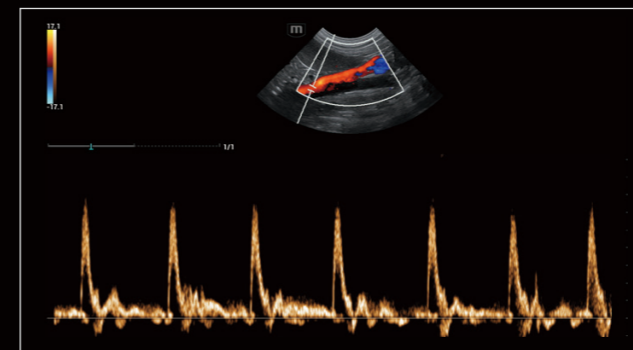
Tendon Calcification



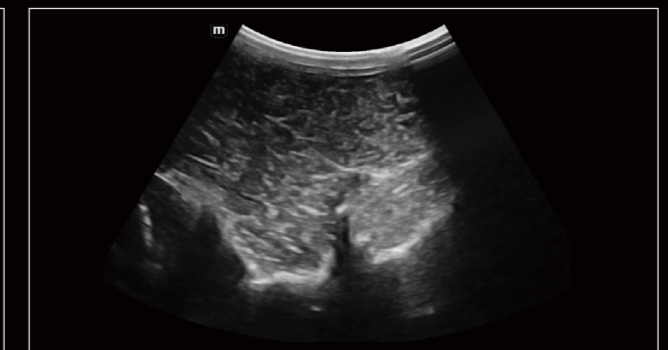
Equine Tendon Effusion



Equine Lumbar Muscle



Equine Abdominal Aorta Flow



Equine Spine